

## Create PostScript Files in QuarkXPress 6



### What You Need to Know

- Create a PostScript file
- Set Printer Specific Features for Brisque and PS/M

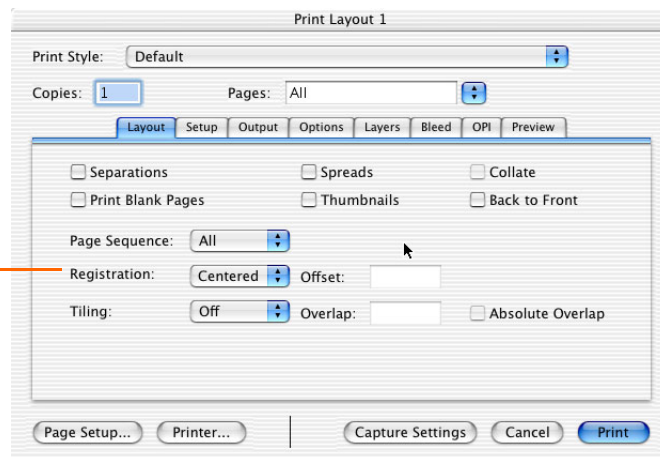


**Note:** The steps in this lesson are numbered in the order in which you should perform them. In most cases, the steps also point to the applicable screen areas in the illustrations. Be sure to follow the steps according to the numbered sequence.

## Create a PostScript File

- 1 Open a QuarkXPress file.
- 2 From the QuarkXPress **File** menu, select **Page Setup** or **Print**.

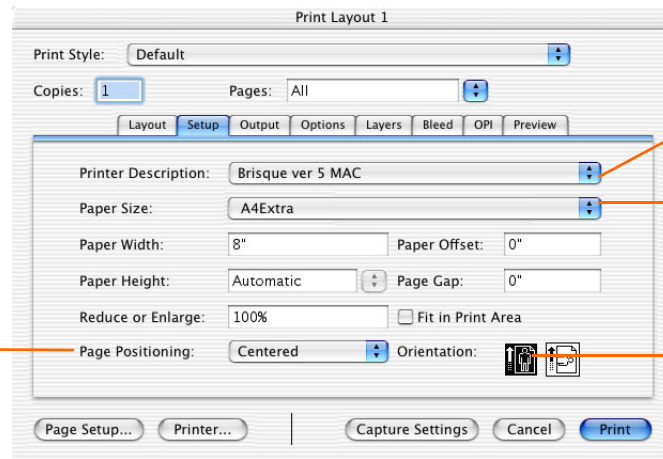
- 3 If you want to use marks, select **Centered** or **Off-center Registration**.



- 4 Click the **Setup** tab.



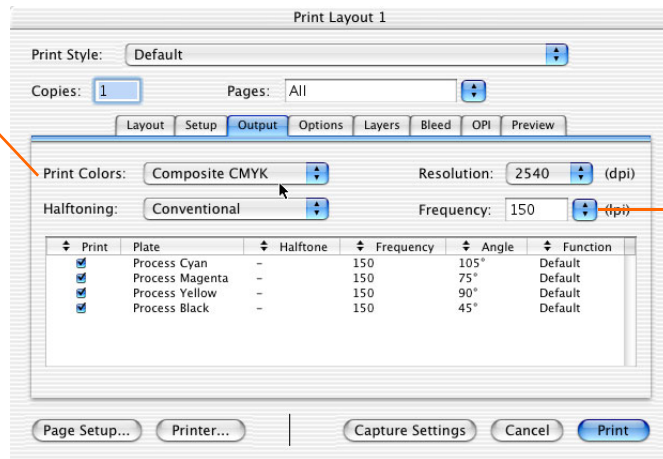
**Note:** You can add labels, crop marks, registration marks, and color bars, either here or in the output device. If you add the marks in QuarkXPress, make sure that you select a large enough page size to contain the marks.



- 5 Select a Creo PPD file.
- 6 Select a paper size.
- 7 Select a **Page Positioning** setting.
- 8 Make sure that **Orientation** is set to portrait.
- 9 Click the **Output** tab.



**Note:** If you want to set **Paper Size** to **Custom**, you must enter a setting manually for **Paper Height**. The automatic setting does not allow for page centering.

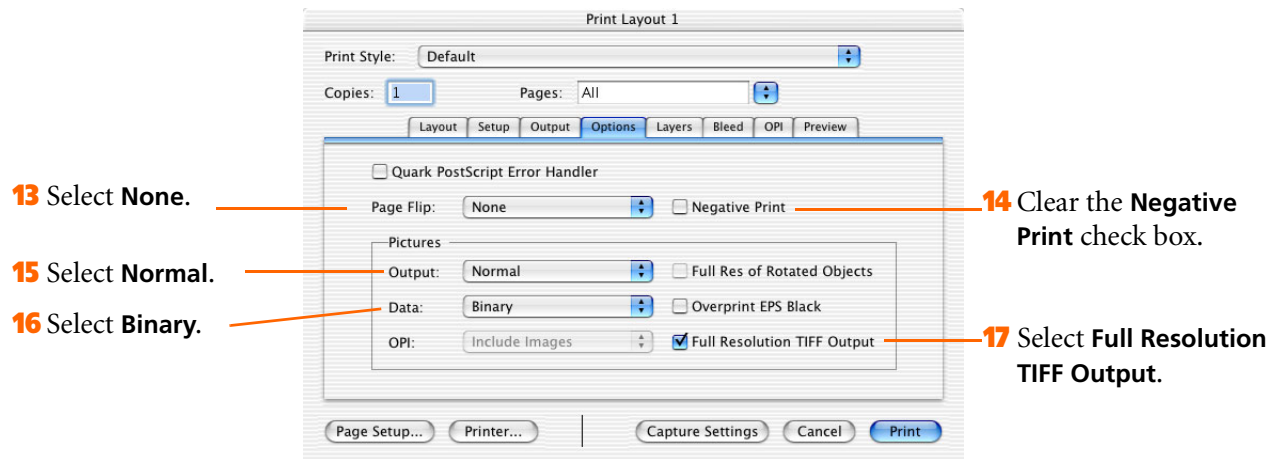


- 10 Select the **Print Colors** setting:
    - To use process printing, select **Composite CMYK**.
    - To retain the spot colors, select **As Is**.
  - 11 Type **400**
- In this example we are using **Composite CMYK**.

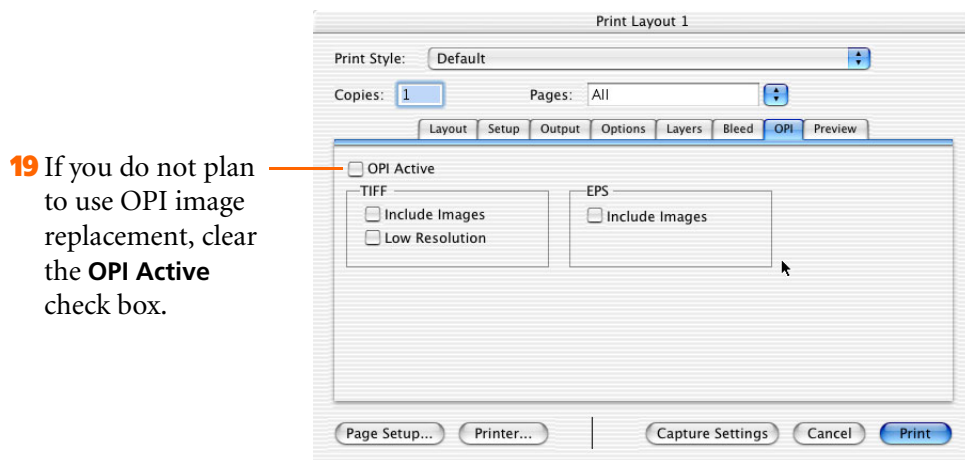
12 Click the **Options** tab.



**Note:** The **Halftoning**, **Resolution** and **Frequency** parameters are ignored by the Creo workflow software.



18 Click the **OPI** tab.



## Set Printer Specific Features for Brisque and PS/M

If you want to change printer-specific settings, follow these steps:

1. In the QuarkXPress Print dialog box, click the **Printer** button.
2. From the list of printers, select a Brisque or PS/M printer.
3. In the option list, select **Printer Specific Options**.

### For Brisque:

- a. In the QuarkXPress software, for the CMYK labels for **Quark 4+** option, select **Yes** to add marks; otherwise select **No**.
- b. For all the Brisque-related options, leave the default settings as they are. Changes in these settings override the Brisque template settings and effectively transfer the control of the RIP to QuarkXPress. For information about these settings, see the Brisque documentation.

### For PS/M:

- In the QuarkXPress software, for the CMYK labels for **Quark 4+** option, select **Yes** to add marks; otherwise select **No**.
4. Click **Print** to close the dialog box and return to the QuarkXPress Print dialog box.